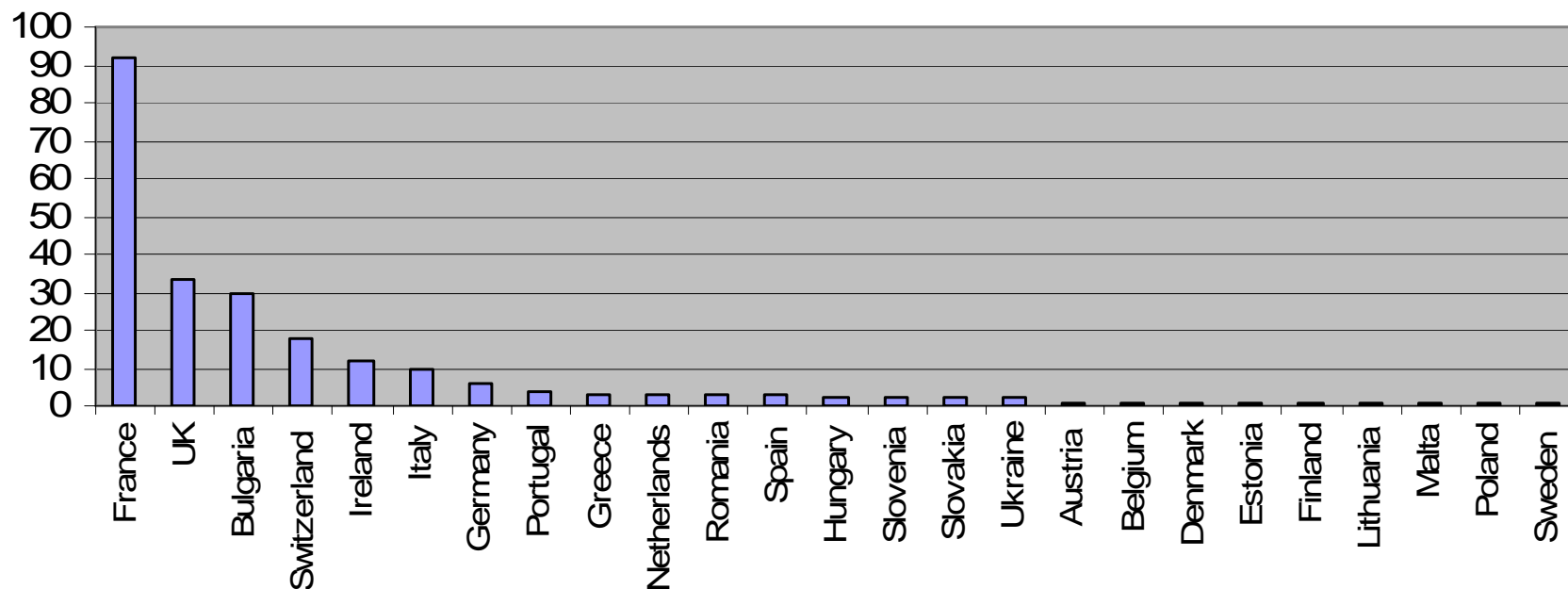


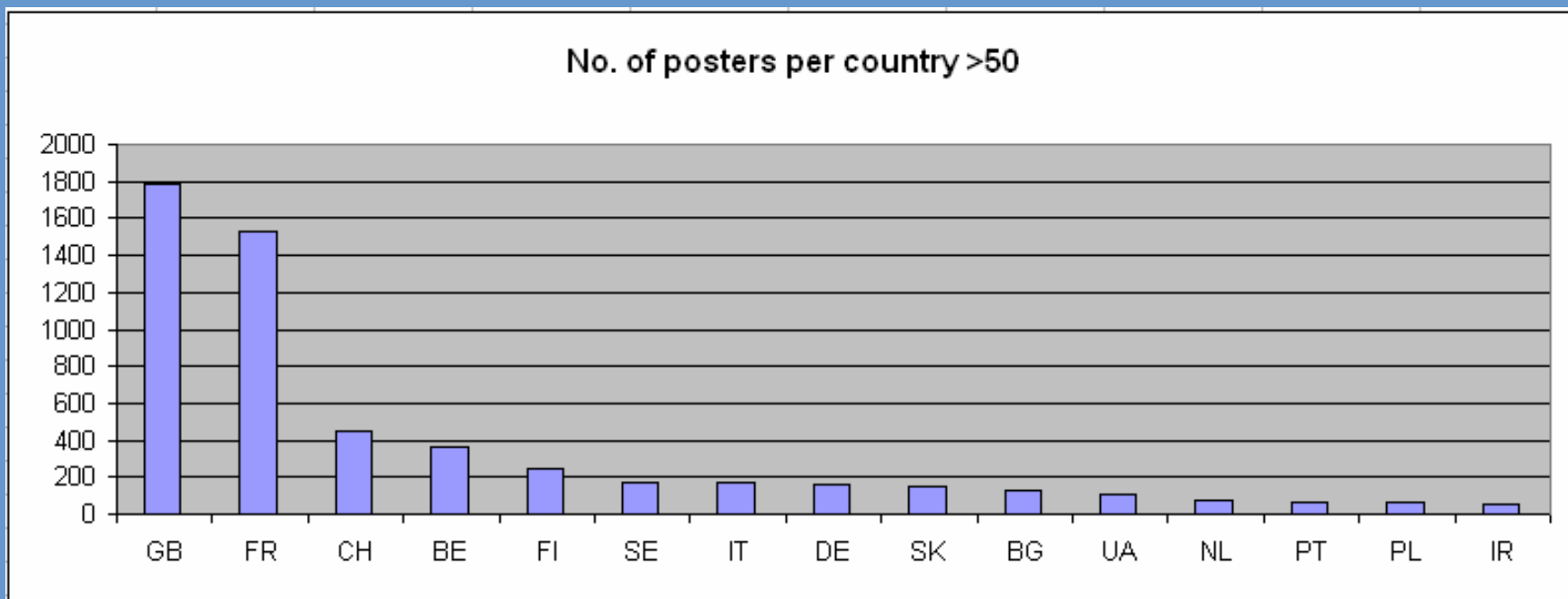
# Comment se situent les villes françaises dans la Campagne Display<sup>®</sup> ?

# Villes participants par pays (234) – 29 janvier 2007

Number of adherents per country (total 234) jan 07



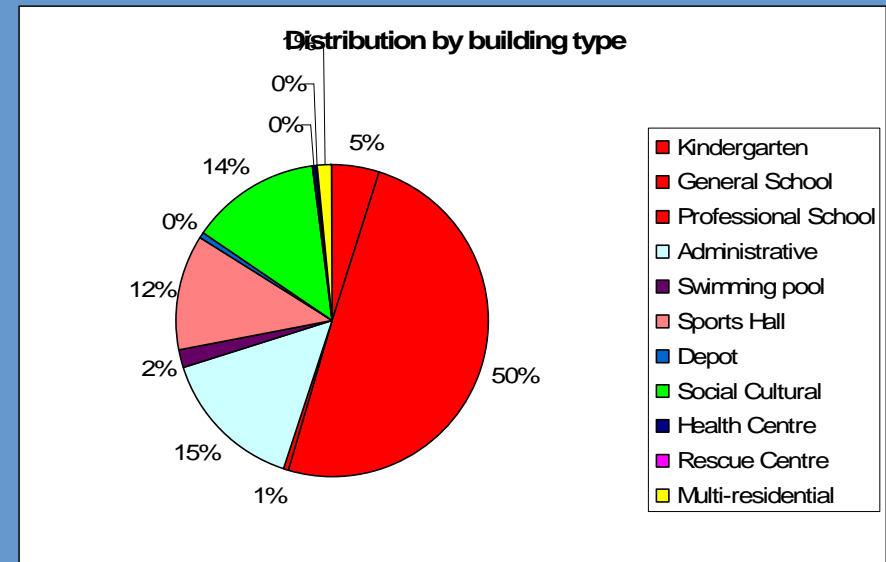
# La position de la France



# 4588 bâtiments dont La France 1626 affiches

fin janvier 2007

Kindergarten	83
General School	802
Professional School	9
Administrative	242
Swimming pool	35
Sports Hall	194
Depot	6
Social Cultural	224
Health Centre	6
Rescue Centre	1
Multi-residential	24



# CLASSIFICATIONS DISPLAY PAR TYPE DE BATIMENT

Tableau 1 Système de classification pour le ratio d'énergie primaire

kWh/ (m <sup>2</sup> .an)	Educatif				Installation sportive						
	1	2	3	4	5	6	7	8	9	10	11
	Crèche / Jardin d'enfant	Enseignement général	Enseignement professionnel	Administratif	Piscine	Gymnase	Entrepôt	Socio-Culturel	Dispensaire médical	Centre de secours	Logement collectif
<b>A</b>	75 ≤ X	75 ≤ X	75 ≤ X	X ≤ 75	X ≤ 500	X ≤ 75	X ≤ 250	X ≤ 75	X ≤ 250	X ≤ 100	X ≤ 50
<b>B</b>	75 < X ≤ 145	75 < X ≤ 140	75 < X ≤ 145	75 < X ≤ 140	500 < X ≤ 1000	75 < X ≤ 150	250 < X ≤ 350	75 < X ≤ 160	250 < X ≤ 350	100 < X ≤ 140	50 < X ≤ 100
<b>C</b>	145 < X ≤ 215	140 < X ≤ 205	145 < X ≤ 215	140 < X ≤ 205	1000 < X ≤ 1500	150 < X ≤ 225	350 < X ≤ 450	160 < X ≤ 245	350 < X ≤ 450	140 < X ≤ 180	100 < X ≤ 150
<b>D</b>	215 < X ≤ 285	205 < X ≤ 270	215 < X ≤ 285	205 < X ≤ 270	1500 < X ≤ 2000	225 < X ≤ 300	450 < X ≤ 550	245 < X ≤ 330	450 < X ≤ 550	180 < X ≤ 220	150 < X ≤ 200
<b>E</b>	285 < X ≤ 355	270 < X ≤ 335	285 < X ≤ 355	270 < X ≤ 335	2000 < X ≤ 2500	300 < X ≤ 375	550 < X ≤ 650	330 < X ≤ 415	550 < X ≤ 650	220 < X ≤ 260	200 < X ≤ 250
<b>F</b>	355 < X ≤ 425	335 < X ≤ 400	355 < X ≤ 425	335 < X ≤ 400	2500 < X ≤ 3000	375 < X ≤ 450	650 < X ≤ 750	415 < X ≤ 500	650 < X ≤ 750	260 < X ≤ 300	250 < X ≤ 300
<b>G</b>	X > 425	X > 400	X > 425	X > 400	X > 3000	X > 450	X > 750	X > 500	X > 750	X > 300	X > 300

Tableau 3 Système de classification pour le ratio de CO<sub>2</sub>

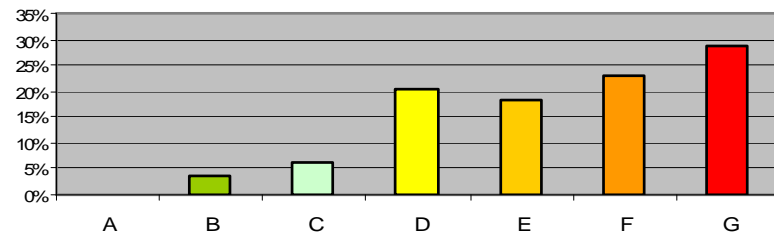
kg/ (m <sup>2</sup> .an)	Educatif				Installation sportive						
	1	2	3	4	5	6	7	8	9	10	11
	Crèche / Jardin d'enfant	Enseign ement général	Enseign ement professi onnel	Adminis tratif	Piscine	Gymnase	Entrepôt	Socio- Culturel	Dispens aire médical	Centre de secours	Logeme nt collectif
<b>A</b>	15 ≤ X	15 ≤ X	15 ≤ X	15 ≤ X	X ≤ 100	X ≤ 15	X ≤ 50	X ≤ 15	X ≤ 50	X ≤ 20	X ≤ 10
<b>B</b>	15 < X ≤ 29	15 < X ≤ 28	15 < X ≤ 29	15 < X ≤ 28	100 < X ≤ 200	15 < X ≤ 30	50 < X ≤ 70	15 < X ≤ 32	50 < X ≤ 70	20 < X ≤ 28	10 < X ≤ 20
<b>C</b>	29 < X ≤ 43	28 < X ≤ 41	29 < X ≤ 43	28 < X ≤ 41	200 < X ≤ 300	30 < X ≤ 45	70 < X ≤ 90	32 < X ≤ 49	70 < X ≤ 90	28 < X ≤ 36	20 < X ≤ 30
<b>D</b>	43 < X ≤ 57	41 < X ≤ 54	43 < X ≤ 57	41 < X ≤ 54	300 < X ≤ 400	45 < X ≤ 60	90 < X ≤ 110	49 < X ≤ 56	90 < X ≤ 110	36 < X ≤ 44	30 < X ≤ 40
<b>E</b>	57 < X ≤ 71	54 < X ≤ 67	57 < X ≤ 71	54 < X ≤ 67	400 < X ≤ 500	60 < X ≤ 75	110 < X ≤ 130	56 < X ≤ 73	110 < X ≤ 130	44 < X ≤ 52	40 < X ≤ 50
<b>F</b>	71 < X ≤ 85	67 < X ≤ 80	71 < X ≤ 85	67 < X ≤ 80	500 < X ≤ 600	75 < X ≤ 90	130 < X ≤ 150	73 < X ≤ 90	130 < X ≤ 150	52 < X ≤ 60	50 < X ≤ 60
<b>G</b>	X > 85	X > 80	X > 85	X > 80	X > 600	X > 90	X > 150	X > 90	X > 150	X > 60	X > 60

Tableau 3 Système de classification pour le ratio d'eau

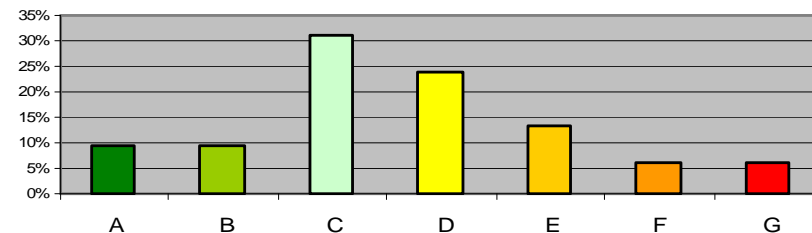
L/ (m <sup>2</sup> .an)	Educatif				Installation sportive						
	1	2	3	4	5	6	7	8	9	10	11
	Crèche / Jardin d'enfant	Enseign ement général	Enseign ement professi onnel	Administ ratif	Piscine	Gymnase	Entrepôt	Socio- Culturel	Dispens aire médical	Centre de secours	Logeme nt collectif
<b>A</b>	200 ≤ X	100 ≤ X	125 ≤ X	X ≤ 100	X ≤ 400	100 ≤ X	X ≤ 350	X ≤ 50	X ≤ 500	X ≤ 350	X ≤ 500
<b>B</b>	200 < X ≤ 350	100 < X ≤ 225	125 < X ≤ 250	100 < X ≤ 200	400 < X ≤ 600	100 < X ≤ 225	350 < X ≤ 500	50 < X ≤ 125	500 < X ≤ 750	350 < X ≤ 500	500 < X ≤ 750
<b>C</b>	350 < X ≤ 500	225 < X ≤ 350	250 < X ≤ 375	200 < X ≤ 300	600 < X ≤ 800	225 < X ≤ 350	500 < X ≤ 650	125 < X ≤ 200	750 < X ≤ 1000	500 < X ≤ 650	750 < X ≤ 1000
<b>D</b>	500 < X ≤ 650	350 < X ≤ 475	375 < X ≤ 500	300 < X ≤ 400	800 < X ≤ 1000	350 < X ≤ 475	650 < X ≤ 800	200 < X ≤ 275	1000 < X ≤ 1250	650 < X ≤ 800	1000 < X ≤ 1250
<b>E</b>	650 < X ≤ 800	475 < X ≤ 600	500 < X ≤ 625	400 < X ≤ 500	1000 < X ≤ 1200	475 < X ≤ 600	800 < X ≤ 950	275 < X ≤ 350	1250 < X ≤ 1500	800 < X ≤ 950	1250 < X ≤ 1500
<b>F</b>	800 < X ≤ 950	600 < X ≤ 725	625 < X ≤ 750	500 < X ≤ 600	1200 < X ≤ 1400	600 < X ≤ 725	950 < X ≤ 1100	350 < X ≤ 425	1500 < X ≤ 1750	950 < X ≤ 1100	1500 < X ≤ 1750
<b>G</b>	X > 950	X > 725	X > 750	X > 600	X > 1400	X > 725	X > 1100	X > 425	X > 1750	X > 1100	X > 1750

# Crèche

**Energy ratio distribution**

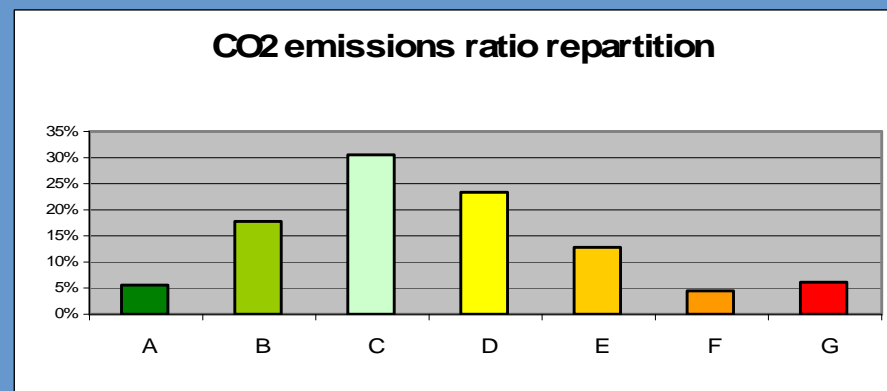
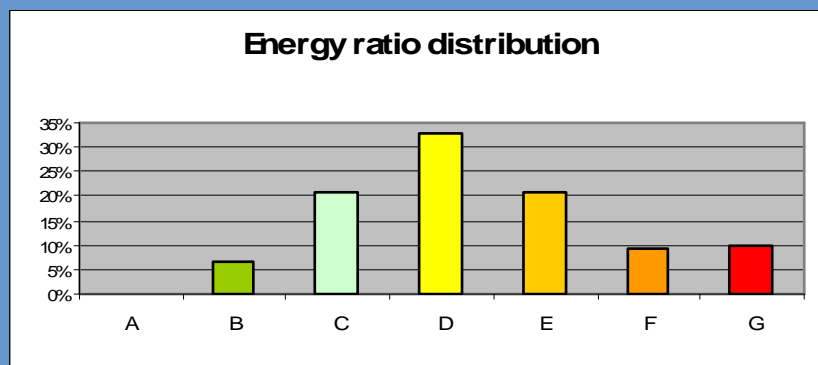


**CO2 emissions ratio repartition**



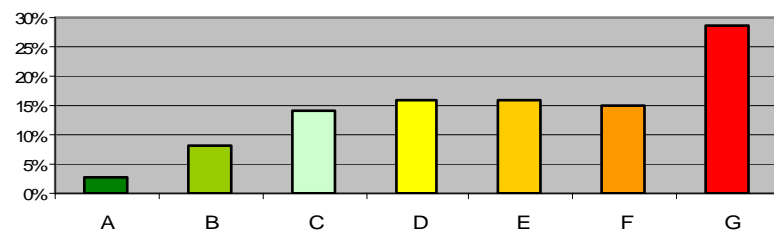


# Enseignement Général

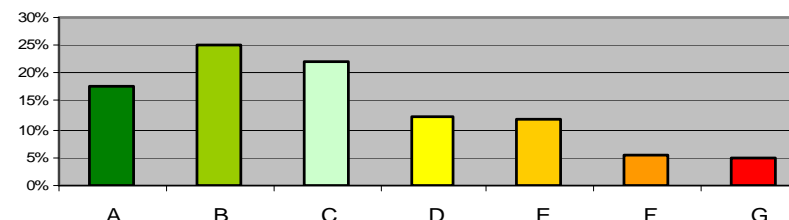


# Administratif

**Energy ratio distribution**

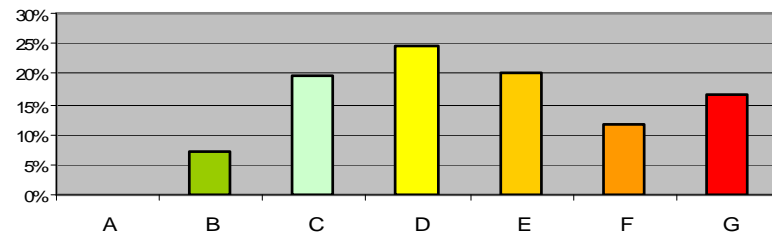


**CO2 emissions ratio repartition**

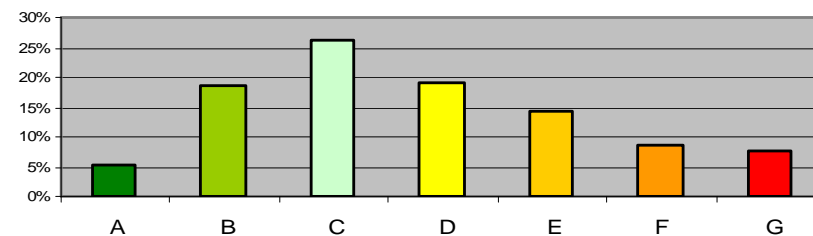


# Gymnase

Energy ratio distribution



CO2 emissions ratio repartition



# Socio-Culturel

