

Almada launches Local Agenda

Towards Class A - Shining examples ...are everywhere and in a town near you...

“Sustainability begins at home”

The building was refurbished with the aim of providing an appropriately environmentally- and energy- conscious home for the Environmental Planning Department, Ecolibrary and the Local Energy Management Agency of Almada.



The Casa Municipal do Ambiente is a Shining Example as it was refurbished implementing innovative energy efficiency measures in each of the main 'sectors': building envelope, lights and appliances, and heating/cooling - signaling clear progress towards Almada's Local Agenda 21

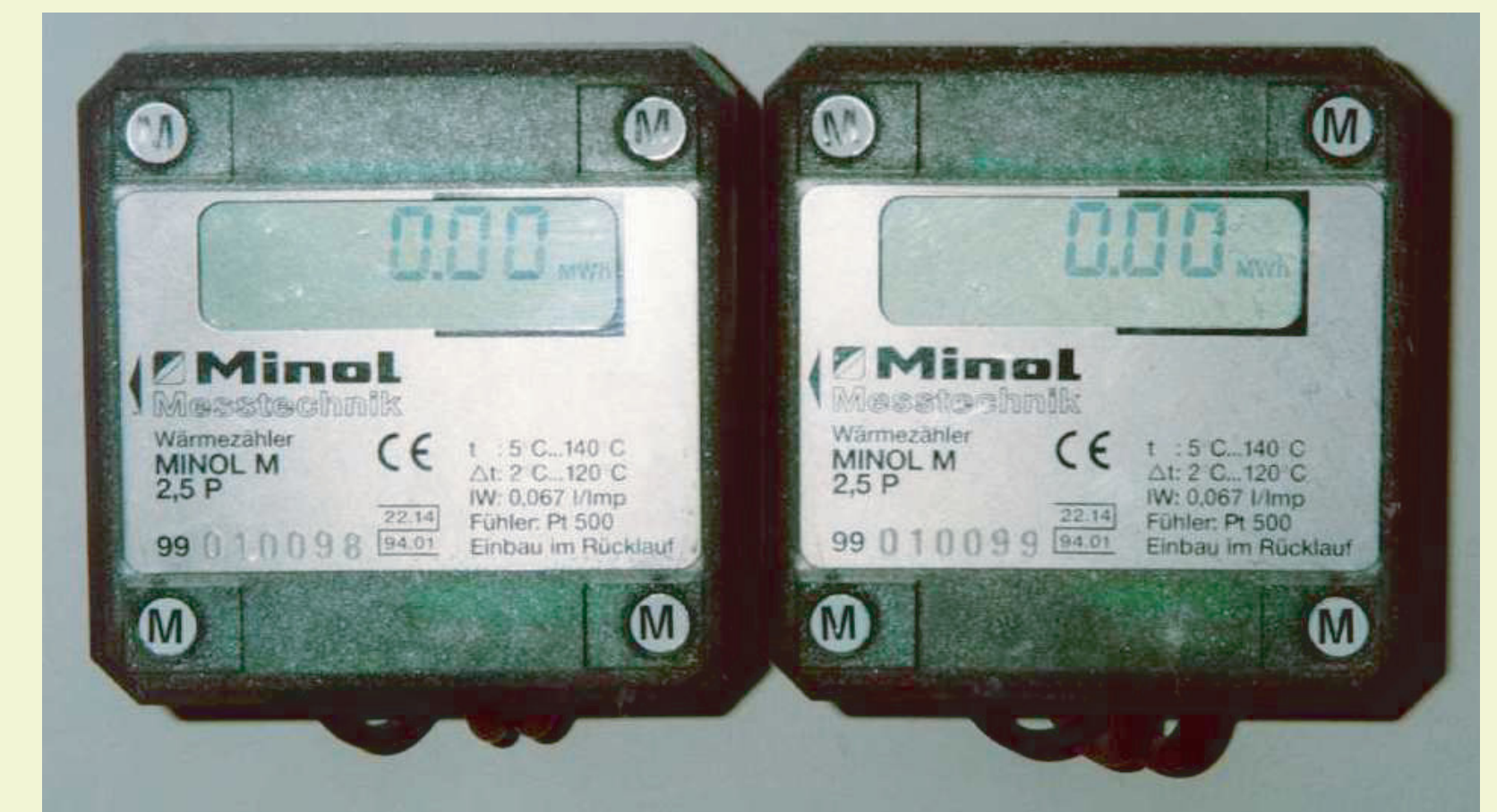
Technical Solutions

- For the building envelope, thermal insulation was applied to the roof and double glazed windows were installed.
- There is also a new efficient lighting system, with both movement/occupancy sensors and daylight sensors.
- The air conditioning system is a natural gas direct-fired absorption chiller for cold water production, coupled with a natural gas hot water boiler.
- The building also benefits from good natural ventilation, which brings cool air from the shady back of the building through several entrances which can be left open according to need.

Benefits

Refurbishing the Casa Municipal do Ambiente was fully funded by the local authority. The main benefits are the reduced energy (electricity and natural gas) and water consumption.

Heat metering and monthly energy readings are carried out. As a result of the strong communication of these results a high level of environmental and energy awareness amongst the staff was established and new energy-saving opportunities could be identified over time.



Heat metering and monthly energy readings are carried out. As a result of the strong communication of these results a high level of environmental and energy awareness amongst the staff was established and new energy-saving opportunities could be identified over time.

Lesson learned

Active measures, such as the lighting control system installed, have proven very effective. Overall, the approach taken for the Casa Municipal do Ambiente is considered a successful one, with other local services taking this building as an example to follow in order to replicate its success.

At the time of refurbishment, technologies used had not been widely implemented.

As a result, it took some time to optimally adjust the installed equipment to the building's requirements. Visits to buildings with similar technologies already installed would have helped a smoother implementation to be achieved.



Partners



Contact Almada : elisabete.serra@ageneal.pt

Partner	Contact Person	E-mail of contact person
Energie-Cités - the association of European local authorities promoting local sustainable energy policy (coordinator)	Peter Schilken	pschilken@energie-cites.org
EnEffect - Centre for Energy Efficiency (Bulgaria)	Zoya Giurova	zgiurova@eneffect.bg
EuroACE - European Alliance of Companies for Energy Efficiency	Jacky Pett	jacky@ukace.org
CEMR - Council of European Municipalities and Regions	Pirita Lindholm	plindholm@bxl-ccre.org
ACE/CAE - Architects' Council of Europe	Alain Sagne	alain.sagne@ace-cae.org